

Santa Teresa Women's Golf Club



CAPTAIN'S CORNER

Rain, rain, go away, come again, say...next December. Indeed, we've had our share of rain in 2011. I am still trying to put away my warm winter fleece, wool socks, and long underwear. But it seems no matter how much I hope, the wet and chill remains with us. Isn't June already?

In spite of the damp and cold, we have transitioned to "summer rules". We finally completed our spring eclectic (many thanks to Mary Miyahara for her patience in giving us a few more weeks); our outreach tournament for the Susan G. Komen Foundation to cure breast cancer, our own "Rally for the Cure" (thanks Cathy Priest for putting on such a fine event); and our newly formatted two-round Partner Match Play tournament which replaced the Handicap Tournament (thank you Pat Skavdahl for being pro-active and putting forward this well-received event. It's been a great year so far.

I'd like to take this opportunity to congratulate our Captain's Trophy winners: in April, Josie Gutierrez (73); May, Ingrid Sander (70); and June, Jan Hew (69).

I wish to thank all who are involved in running our Thursday-to-Thursday play days, board members, committees and

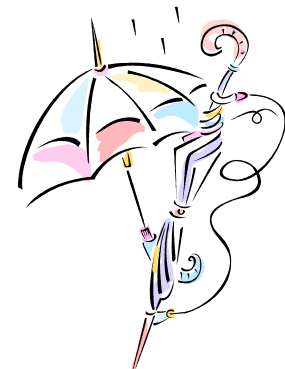
members. I especially wish to recognize Pat Yelvington who has throughout each week kept us informed of our tee times and in some cases our hole assignments. Please give her a pat on the back when you see her because this new method is so much more informative and has taken a lot of the burden off the starters. I also want to thank her for doing some Spring-cleaning as she has organized our files and our two file drawers. We can actually open the drawers and find what we need. And yes, congratulations to her on her hole-in-one!

There are exciting events still upcoming! They include the Partner Eclectic, Club Championship, Super Guest Day, Halloween Mystery Event and finally the Christmas party which will be held once again at the Villages on Friday, Dec. 9. *Don't forget to mark your calendars.*

Finally, I'd like to welcome new regular members Makiko Kubo and Mimi Spearing and new associate member, Michelle Ney.

Stay Dry!!!!

Barbara Hiura
Captain





SPRING ECLECTIC

The Spring/Individual Eclectic is finally in the books. Due to cancelled play days because of the wet weather this Spring, our Eclectic was extended. We

eventually got in all of our 8 weeks. Whew! Didn't it feel like it went on forever?

We had 6 flights with 7 or 8 players in each flight except for FLIGHT 3 which had 6. Each flight had 4 places awarded with the exception of flight 3 with 3 places awarded. The winners are as follows:

FLIGHT 1

1st Harumi Mori
2nd Mary Forster
3rd Sue Treleven
4th Jan Hew

FLIGHT 3

1st Pam Schwarz
2nd Josie Gutierrez
3rd Mary Miyahara

FLIGHT 5

1st Tomie Sera
2nd Naomi Nakano
2nd Felicia Angeles
4th Martha Kawanami

FLIGHT 2

1st Ingrit Sander
2nd Leta Walter
3rd Deanna Griffin
4th Gina Gordon

FLIGHT 4

1st Pat Yelvington
2nd Emi Tuvey
3rd Jean Hiraishi
4th Dorothy Hiura

FLIGHT 6

1st Bev Pedersen
2nd Irene Mohler
3rd Bonnie White
4th Diana Flanigan



Congratulations winners! Thank you all for your participation in this fun event. Great job in keeping your weekly scores! Please look on our website for more detailed scoring information.

Start thinking about a partner for the Partner Eclectic. It will be here before you know it.

Sign-ups will be taken soon.



NOTE TO NEW MEMBERS:

Names of members are registered on the eClub web site <http://santateresa.ghinclub.com/>. You can find the address, phone number and email address on the MEMBERS menu.

In the bathroom there are photos of all the members on the wall. We'd like to include you as well. Please see Joan Takemoto or Jan La Fetra and have your photo taken.

Mary Miyahara/Cindy Moon
Eclectic Chairpersons

TEAMPLAY 2011

First I want to thank all the participants in this year's Santa Clara County teamplay, but most especially Emi Tuvey and Felicia Angeles who I "nominated" as co-captains since I was only able to play in one of our 9 games. Leta Walter and Arline Stepovich also volunteered to help me as marshals when Santa Teresa hosted teamplay; they spent a full day watching the play and nudging the slow teams along.



Amazingly we were able to play all of the games this year as originally scheduled. There were NO days with rain, which considering the weather this year is simply shocking.

We finished 4th in gross scores. I will pass on discussing our net scores. But suffice it to say there are some really great players in our county. Hopefully, our players were able to see some old friends from the other clubs and perhaps developed some new friendships.

If you enjoyed playing in our two week Match Play tournament in May, then you will enjoy teamplay in 2012. The format is basically the same - you and your Santa Teresa partner play match play format against two players from another club. The best score for the two players wins the hole. It is a fun competition and a great way to play some other courses in our county.

Go Santa Teresa!

Please send me an email at cathypriest@earthlink.net if you would like to join us this year and give me the dates when you can play.

Cathy Priest
Team Captain



STARTERS AND SCORERS

A STWGC annual membership requirement is to take on the role of a starter and scorer in order to sustain our club. We took a suggestion from a member and have revised the Starter and Scorer instructions into a simplified step-by-step process.

This new procedure is attached to the reminder email sent to alert you to your duty of starter or scorer. Please take the time and download the procedure, print and review it before you come to fulfill your role.

With your attention, our club will continue to grow and we will all enjoy the game of golf.

Martha Kawanami & Naomi Nakano
Committee Chairpersons



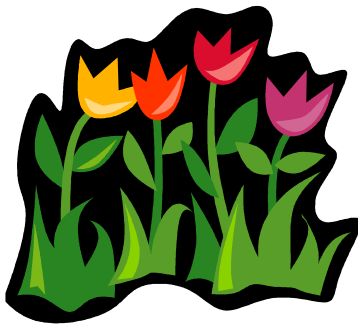
TOURNAMENT

We have heard only compliments on Patty Yelvington's hard work to organize our tee times on a weekly basis and email alert the membership to our tee-times.

Refer to the note to the right for the procedure.

Thank you, Patty!

*Ann Kusumoto, Emi Tuvey, Namie Takatsuka and Patty Yelvington
Tournament Chairs*



We'd like to endorse your checking the eClub site:
<http://santateresa.ghinclub.com/>
to view the current, updated schedule.

For our bylaws, Rules Corner postings, Minutes of meetings, history, photos of events, etc. check out the site at
<http://www.stwgc.com/>.

REVIEW OF SIGN-UP PROCEDURE

The new email distribution of tee times seems to be working well, but it is worth a quick review, especially for those playing for the first time this year as our weather turns warmer.

The clipboard of sign-up sheets is in the Pro Shop and sign-ups can be up to three weeks in advance of play. Besides signing up in person, you can always call the Pro Shop to select a date/time to play.

Week of Play

Monday: Patty Yelvington creates a Preliminary Tee Sheet and sends to the membership.

Monday thru Wednesday: for tee times, sign-ups and cancellation, please contact Patty.

Wednesday Evening: the final Tee Sheet is sent to the membership and Pro Shop.

A cancellation after Wednesday night must be called into the Pro Shop Thursday morning—the day of play.

1st Tee Group If you are in the 1st group, please feel free to realign any tee markers forward for the day's play.

PARTNER MATCH-PLAY

Tourney Attracts 40 Players!

Reducing the number of play days of the former Handicap Tournament from four to two for the new Partner Match Play Tournament drew 40 players to participate on May 19 and 26. There were five flights of four teams each, and 75% of the participants won prize money. The results are as follows;



Flight 1

- 1st Ann Kusumoto and Pam Schwarz
- 2nd Carla Munoz and Dora Moutafian
- 3rd Rosemary Haeckel and Sue Treleaven

Flight 2

- 1st Cindy Moon and Fudge Masuda
- 2nd Harumi Mori and Junko Stonehocker
- 3rd Leta Walter and Emi Tuvey

Flight 3

- 1st Hazel Oh and Mary Miyahara
- 2nd Jean Hiraishi and Dorothy Hiura
- 3rd Bonnie Hagen and Ann Truesdale

Flight 4

- 1st Barbara Schumacher and Bonnie White
- 2nd Naomi Nakano and Martha Kawanami
- 3rd Gina Gordon and Felicia Angeles

Flight 5

- 1st Mary Mason and Jeanette Gilbeau
- 2nd Tomi Sera and Casey Rodriguez
- 3rd Nancy Perkins and Bev Pedersen

*Tomie Sera and Pat Skaudahl
Chairs*

SUNSHINE

Here are the names of folks to whom I've sent remembrances : Connie Colettie, Jane Lee, Maria Kuschell and Corrine Valenti.

A huge "thank you" from our pro Kelly for the generous gift certificate welcoming his new baby boy.

As always, I only know when to send a card to one of our members when you let me know so don't hesitate to keep me informed.

GINA GORDON
Sunshine Chair



Rally for the Cure



We made it!

We can be very proud of this year's 5th Rally for the Cure. The raffle is always a great success and with the entry fees we raised a total of \$3180.35. Combined with the past 4 years we exceeded my personal goal of \$15,000 by \$74.35! Congratulations to all of us and thank you for your continued support.

This year we had 57 players. Many ladies who weren't able to play contributed to the rally either financially or through raffle donations. I thank you.

We had 11 ladies hit the green on hole #7 winning a Titleist pink ribbon golf ball. To my surprise Naomi Nakano and Mona Nakamura TIED for closest to the pin!! I can't recall the exact distance but I played with Mona and I was sure she would win and then Naomi matched her exactly to the inch! The prize this year was a rolling golf bag for travel which Mona kindly gave to Naomi since Mona already had a bag.

Barbara Hiura captured the honors as being closest to the center line.

Again a special thanks goes to those who donated items for our raffle AND for those of you who generously purchased raffle tickets or simply made a donation.

Attached is a photo of the majority of the group taken after lunch.

Cathy Priest



THANK YOU

RULES CORNER

Some Quick Tips on Rules

1. Judging Out of Bounds -- If it is a close call as to whether you are in or out of bounds on a hole marked with white out-of-bounds posts, realize it is difficult to visualize a straight line when standing between two posts. Have someone go to the nearest post and sight back towards the post on the other end. It will be very clear which side of the 'line' the ball is on. Recently we decided a ball was about 6 inches 'out' but by looking from the post it was clearly about 8 inches in bounds - a nice surprise.
2. Out of Bounds Between Holes -- In-course of bounds are usually white posts and are marked OB only on the side facing the hole with the out of bounds. Thus, the white posts on the left side of #1 are for that hole, but are only Immovable Obstacles for players on #9. Likewise, the posts on the right side of #2 are for that hole only, and players on the right side of #1 are not affected.
3. What conditions qualify for relief from Immovable Obstructions (IO)? If the IO interferes with the lie of the **ball**, your **stance** as you would take it if the IO wasn't there, or 'the area of player's **intended swing**' you are allowed relief. You are NOT allowed relief if the intended flight of the ball is obstructed.

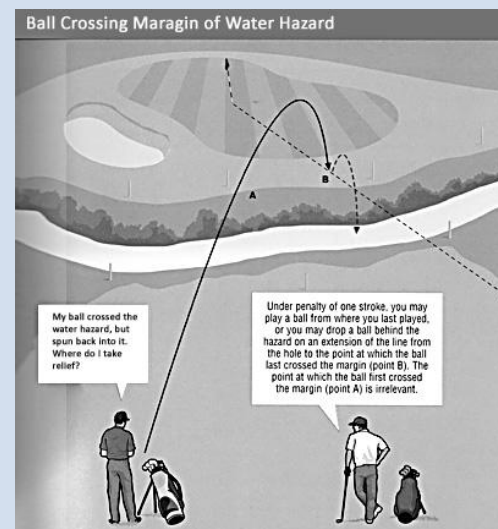
Take the towers on #9 for example. If your ball is up against the base of the tower, or you cannot take a good stance, you get 'nearest relief'. And if you are behind the tower support and your lie and stance are OK, but if your swing would hit the tower, you may take relief, *even though you could easily chip the ball sideways on to the fairway.*

However, if your ball is a few inches further back from the tower so that you can take a full swing, but know that your ball in flight would almost certainly hit the tower, you can NOT take relief. In this case, the most logical thing is to turn and hit it out to the fairway.

For how to correctly take 'nearest relief' go to Rule #24-2 in the USGA Rule Book or look under 'Rules Corner' on our website for Rules Corner #3 - Nearest Point of Relief.

Troubles on Hole #11?

Rule 26-1-b clearly states the ball must be dropped BEHIND the water hazard if you chose not to hit from the original spot. The illustration shows that applies even if the ball landed on the opposite side and rolled back into the hazard.



Beware - at least one Club (Stanford) has a local rule modifying this. The stream curves up and around the right side of the green and there is a very steep slope that almost guarantees the ball will roll back in. They have placed a RED post about the spot where the stream curves, and IF your ball LANDS PAST that post before rolling back in, it is considered a lateral hazard and the player may drop on the green side of the creek.

Rebecca Reece posed a scenario at the General Meeting held on June 2nd regarding finding 'nearest relief' which generated some discussion.

During a game, Becke found the 'nearest relief' from a cart path by using the club she would have used if the cart path had not been there. Then she used her driver (longest club) to measure the area she should drop in. But after taking the drop she wanted to use a different club than the one she had used to find the nearest relief. Was that OK? The answer is yes. The new position may require a different club because of a change in the lie or that something is (or is not) now in the way.

I felt I needed to look into this before answering definitively. Less than a week before, I had quite a discussion with a former Rules Chair from another course who stated that the Rule Book does not specify the use of any particular club when measuring. In addition, she pointed out that for *Unplayable Lies (Rule #28)* only the words "two club lengths" are used and in relief from *Immovable Obstructions (Rule #24-4)* only the words "one club length" is used. A quick check of the Rule Book showed she was right. But I could not believe that the way I had been taught and seen so often and the way Becke did it was not in the Rule Book. I decided to really follow through on this. But at the meeting I didn't want to say anything I wasn't absolutely sure of.

Now that I have checked, the answer **is everyone was basically right**. Only in the 'Definitions' section near the start of the Rule Book under 'Nearest Point of Relief' is a specific club mentioned. There is a 'Note' at the end of that section that says the 'player should use the club with which he would have made his next stroke if the condition were not there'. **But the USGA clearly states 'should' means 'recommended', not 'must'.**

Bottom Line: Proceed as Becke did because it is golfing etiquette - not because it is mandatory.

